

## **Historic, Archive Document**

Do not assume content reflects current scientific knowledge, policies, or practices.





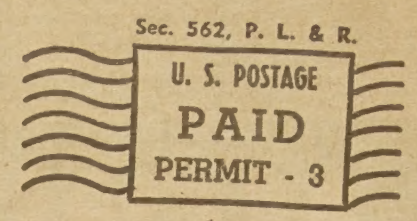
LIBRARY  
MAY 26 1943  
U.S. DEPARTMENT OF AGRICULTURE  
NURSERIES

**VICTORY GARDEN EDITION**

# Spring Hill Nursery News

Order by Mail • Quick, Easy and Economical • Spring Hill Nurseries, Est., 1849

## PLANTING TIME IS HERE!



# SAVE at Spring Hill's BIG SPRING SALE

RELAXATION for strained nerves  
BEAUTY for the sad heart  
FOOD for health and table

Miss Newman South, D.C.  
Division of Fruit & Veg  
Crops & Diseases  
Bureau of Plant Industr  
U. S. Dept. of Agri.  
Washington, D. C.

### tip top QUALITY at tremendous SAVINGS



GARDEN FOR VICTORY

**NEW HARDY PECAN . . . in lots of 3 as low as 45c each**  
These splendid, rapid growing high trees yield quality pecans in abundance and are sturdy and hardy as an oak. 1 to 1 1/2 ft., 2 yr. trees, specially priced at 50c each; 3 for \$1.35. Other Nut Tree offers see page 11.



Pecan

**ALL SEASON PEACH ORCHARD . . . . Six Trees 75c**  
Tree ripened peaches for 8 weeks from early to late. GUARANTEED one each of six leading commercial, freestone, yellow varieties. Strong commercial planters, 2 to 3 ft. grade, will bear third year, 6 for 75c. Other Fruit Trees see pages 6 and 7.



Peach

**LARGE BEARING AGE GRAPE VINES . . . 75c each**  
Why wait? You can enjoy grapes from your own vines next fall. Plant now! The vines we will send you have already produced one crop of fruit. Concord only, trimmed for planting. 75c each; 3 for \$1.98.

**AMERICAN HAZEL NUT . . . . . 35c each**  
Hardy and easy to grow. Large sweet kernels which crack out whole. A beautiful and ornamental shrub-like plant suitable for shrub and border plantings. 2 yr., 1 1/2 ft. tall, 35c each; 3 for 90c. 3 ft. bearing age, \$1.00 each.

### Early Bird Specials LIMITED STOCK ON ITEMS BELOW Order NOW!



**New Giant GOLDEN BELL**  
Forsythia Spectabilis-Special 1 to 1 1/2 ft., 35c each, 4 for \$1.25; 12 for \$3.30. Heavy 3 ft. size, 65c each; 4 for \$2.45. Complete description see Shrub page 11.



**CANNA BED**  
20 No. 1 hand picked 36E eye roots \$1.95. Regular \$2.30 value. Complete offer see Canna page 3.



**6 Beautiful EVERBLOOMING ROSES \$1.00**  
Guaranteed finest graded 2 year field grown hybrid tea roses, 6 for \$1.00. Complete description see page 9.



**Beautiful Pink Flowering Dogwood**  
(Cornus Florida Rubra)—Considered most beautiful flowering tree. Special heavy 4 year, 3 ft. size, \$1.75 each; 3 for \$4.75. 5 ft. size, \$6.00 each.

**Mail Orders**

Shipped at proper planting time. Supply limited on many varieties. It will pay you to order early.

**10 SALE SEE PAGE 10**

## SPRING HILL NURSERIES

TIPP CITY, OHIO  
Established 1849; Three Generations of Continuous Service



VALUE!

HARDY HIBISCUS

3 for 40c



Large red, white and pink flowers 6 to 10 in. across. Blooms from July until killed by frost. Fifty to one hundred blooms on one plant. 2 yr. plants, 3 for 40c; 10 for \$1.25.

VALUE!

HARDY SWEET PEA

3 for 30c



(Lathyrus)—Grows each year without replanting and blooms throughout the summer. Fast growing hardy vine with red, pink, white flowers. 3 for 30c; 10 for 89c.

VALUE!

BLUE FL. FLAX

3 for 36c



(Linum Perenne)—Profusion of dainty azure-blue flowers from May to August. Wonderful border and rock garden plant. 2 yr. size, special savings, 3 for 36c; 6 for 60c.

VALUE!

RED HOT POKER

22c ea.



(Tritoma)—Flame colored flowers on 2 to 3 foot stems. The plants are hardy and have a dozen flower stalks the first year. 2 year plants 22c each; 3 for 50c.

# MONEY SAVERS!



**NEW BOYSENBERRY** The largest, high-quality fruit of all berries. Produces abundantly each year. Six plants will give the average family all the fruit they want for eating and preserving. Boysenberries are often two inches long and an inch in diameter. Bears the next year after planting; the fruiting season lasts about two months. We recommend you buy this wonderful berry. Price, No. 1 plants, 5 for 50c; 10 for 85c; 25 for \$1.85; 100 for \$5.95. 2 yr. bearing age, 3 for 55c; 10 for \$1.50; 25 for \$3.45.

**NEW THORNLESS BOYSENBERRY** Large high quality plants identical to regular boysenberry. Easier to pick, cultivate and work with in every way. Decided improvement. Ripens 2 weeks earlier. Price, 1 yr. No. 1, 3 for 60c; 6 for \$1.00; 12 for \$1.85; 25 for \$3.75; 100 for \$14.50.

**FAMOUS LUCRETIA DEWBERRIES** The first berry to ripen—ten days to two weeks ahead of blackberries. The large Lucretia Dewberries bring a big market price and are a source of real enjoyment in a home garden. Practically disease free and of easy culture. Unexcelled for eating and canning. No. 1 size, 12 for 75c; 25 for \$1.25; 300 for \$3.95.

**ELDORADO BLACKBERRY** Favorite and dependable—extra large, high yielding No. 1 size. 12 for 75c; 25 for \$1.25; 100 for \$3.95. Write for commercial 1000 lot prices.

**GIANT BLUEBERRIES** (New U.S. Department of Agriculture cultivated varieties)—Famous for size, flavor, profit and beauty. We offer Rubel and Jersey, the two leading varieties. Plant 2 or more plants for cross-pollination necessary for good yields. 9 to 12 inch, branched 2 year, 2 for \$1.95; 6 for \$2.50; 12 for \$4.50. 18 inch, heavy clumps, 5 year, bearing age, 2 for \$3.75; 6 for \$10.50; 12 for \$19.65.

## IMPROVED RUSSIAN MULBERRY

A fine hardy, ornamental, fruit-bearing tree. Useful fruits for canning and culinary purposes. Also fine to attract birds. Commences to bear when 2 years old. Bearing age, 3 yr. 3 to 4 ft. tall.

**SPECIAL SALE PRICE 2 for 49¢**  
10 for \$2.15



New Thornless Boysenberry

New Improved High Yielding Strain

**7 RUSSIAN OLIVE \$1**

(Elaeagnus)—Frosted silvery foliage unsurpassed for color accent in plantings and tall growing. Hedges or boxes. 3-4 ft. tall.

**6 SPIREA Thunbergi \$1**

Double bridalwreath; free flowering with snow white double button-like flowers filling the entire plant each spring. Graceful plants, handsome feathery foliage. 2 yr. 2 ft. plants.

**20 Giant Ranunculus \$1**

(Giant Camellia Strain)—Superb double and semi-double blooms with magnificent colors. Splendid for cutting and garden display. Plant in Spring with claws downward two inches deep and 5 to 8 inches apart.

**15 Brilliant ANEMONE \$1**

(Monarch de Caen Strain)—Exceedingly beautiful, robust growing strain with immense saucer shaped flowers of brilliant and varied colored flowers for cutting and garden display. Easy to grow early summer flowering bulbs.

**6 New Orchid Cristata Iris \$1**

Dainty sky blue streamlined orchid flowers. Ornamental grass-like foliage. 1 ft. tall. Excellent for borders and perennial beds.

**12 SWEET WILLIAMS \$1**

A favorite for years, strong, blooming size, best varieties, Newport pink, Scarlet beauty and White.

**1 TULIP TREE \$1**

Tall, handsome, rapid growing with attractive foliage and flowers. Special savings. 3 year heavy 4 ft. tall trees.

**8 Beautiful CARNATIONS \$1**

(Chabaud's Giant Double Improved) Will bloom all summer long for you 16 to 18 inches high, robust and profuse flowering. Crimson, scarlet, pink, white and salmon hybrids.

**5 Handsome Amur Maple \$1**

Handsome dwarf shrub-like tree from China with brilliant red autumn foliage. Very attractive. 2 yr., 3 ft.

**6 HARDY VERBENA \$1**

One plant that blooms from early spring until late fall. Delicate rose and orchid flowers. Continuously in flower.

**3 Fern Leaf PEONIES \$3**

(Anamola)—Fine new extra early blooming peony. The most attractive cut leaf fern-like foliage is beautiful in your garden all season. Brilliant red flowers with salmon-orange centers. New and scarce. 2 yr. large roots, \$1.50 each.

**10 Deutzia Pride of Rochester \$1**

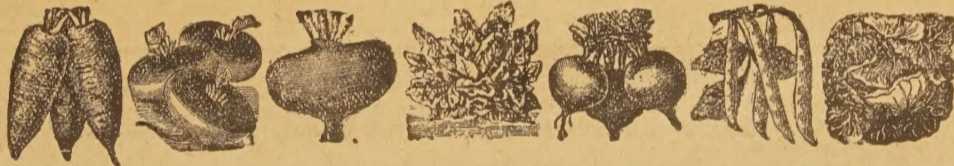
Wonderful profusion of large double white blooms tinted with pink. Prized for beauty. 2 yr., 1 1/2 to 2 ft. size, 35c each.



New Everbearing Lemon

## GIANT PONDEROSA EVERBEARING LEMON

Enjoy this interesting, beautiful and useful dwarf indoor plant. The plants are easy to grow, blooming and fruiting all year. The large, fragrant, waxy white flowers are rich in romance and reminiscent of the gardenia. The large lemons often weigh 2 to 3 pounds and are used for their excellent juice. Priced 2 year, 1 ft. tall, 45c each; 3 for \$1.15. Bearing age, 2 ft. tall, 95c each; 3 for \$2.75.



## NATIONAL DEFENSE SEED OFFER

Save Over Half On Your Grocery Bill This Summer  
15 BIG PACKAGES  
A CERTIFIED \$1.50 VALUE  
All for \$1.00

- 1 pkt. Imp. Golden Wax Beans
- 1 pkt. Stringless Green Beans
- 1 pkt. Burpee Bush Lima Beans
- 1 pkt. Early Fortune Cucumber
- 1 pkt. Tip Top Muskmelon
- 1 pkt. Danvers Carrots
- 1 pkt. White Icicle Radish
- 1 pkt. Sparkler Breakfast Radish
- 1 pkt. Bloomsdale Spinach
- 1 pkt. Little Gem Peas
- 1 pkt. Stowell's Sweet Corn
- 1 pkt. Earliana Tomato
- 1 pkt. B. S. Simpson Lettuce
- 1 pkt. White Globe Turnip
- 1 pkt. Crosby Egyptian Beets

**GUARANTEED** Large packets of highest quality seed. Enjoy a splendid all season garden of healthful vitamin filled meals cheaper and better than market produce. 15 big packets for \$1.00. (No Substitutions Permitted.)

**SPRINGHILL PLEDGES** All receipts from this defense seed offer to be invested in U.S. Defense Saving Bonds. If you wish, mail war stamps in payment of your seed order. You have the seed, Uncle Sam has the money, Springhill has the war bonds.

## FINEST FRESH BULK GARDEN SEED

Name	1/2 lb.	1 lb.	Name	Oz.	1/4 lb.
Beans, Stringless Green Pod	.25	.40	Beets, Crosby Egyptian	.30	1.50
Beans, Bush Lima	.27	.50	Carrots, Danvers	.40	.60
Beans, Improved Golden Wax	.25	.40	Lettuce, B. S. Simpson	.20	.60
Corn, Golden Bantam	.20	.35	Radishes, Scarlet Globe	.20	.60
Corn, Stowell's Evergreen	.20	.35	Spinach, Bloomsdale	.20	.60
Peas, Early Alaska	.25	.40	Turnips, White Globe	.20	.60

ORANGE BUTTERFLY FLOWER

Blooming size, 2 yr.  
3 for 39c

NEW PINK SPEEDWELL

Rare and Beautiful, 2 yr.  
3 for 45c  
20c each

Plumy Everblooming BLEEDING HEART

Blooming size, 2 yr.  
3 for 75c  
30c each

FOUR EVERGREENS

Gold, blue, silver, green  
\$1.00  
3 yr. size

HARDY English Ivy

2 yr., 18 inch Vines  
Grows Indoors or Outdoors.  
3 for 70c  
25c each



# Loveliest New GLADIOLUS

No Other Flower Has The Charm And Beauty of Gladiolus; Largest And Loveliest Favorite Varieties



GLADIOLUS

**BAGDAD** Beautiful smoky-rose so large it is in the mammoth class. A grand dependable tall, cut flower, mid-season variety.

**DR. BENNETT** Most dependable, dazzling scarlet. Outstanding brilliance and size, brighter red than picture. Most fiery-red of all glads.

**MAID OF ORLEANS** Eight large florets open at once on tall straight stems. Immense milky-white blooms, cream throat.

**PICARDY** Enormous, soft, shrimp-pink flowers. Greatest prize winning and most popular variety ever purchased.

**PELEGRINA** Glowing violet or deep purple. Without exception the best variety in its color, tall and straight.

**GATE OF HEAVEN** Well placed, large ruffled florets of rich deep yellow. Deepest, richest buttercup-yellow of any variety.

**LOVELIEST NEW GLADIOLUS PRICES**—Your choice of any one of above varieties labeled, 3 bulbs 25c; 10 bulbs 49c; 30 bulbs \$1.40.

## AMERICA'S BEST Large Flowering "GLADS" BOUQUETS ALL SUMMER

**DE BONAIR** LaFrance pink to shrimp-pink with creamy throat.

**TROUBADOR** Large well-spaced blooms of red-dish-violet.

**KING ARTHUR** Mauve with large massive flowers.

**GOLDEN FRILLS** Early, deep, rich daffodil-yellow.

**VAGABOND PRINCE** Mahogany-buff with scarlet blotch.

**MARGARET FULTON** Striking dark salmon-pink.

**RED LORY** Giant exhibition, carmine-red with violet-throat.

**CADALLIC** Tall, graceful spikes with well-spaced golden apricot-rose.

**ORANGE QUEEN** Large flowered, glowing orange with red stripes. Tall.

**CARMEN SYLVIA** Large open florets well placed, snow white.

**FLAMING SWORD** Bright, scarlet-red, tall strong flower spikes.

**SOUTHERN CROSS** Extra large, exhibition deep crimson of merit.

6 each of 12 large flowering glads listed above, plus 3 Pearl Harbor, 75 bulbs, not labeled, a \$5.25 value for \$3.79.

3 each of 12 large flowering glads listed above, plus 3 New Pearl Harbor, 39 bulbs, not labeled, a \$4.10 value for \$2.65.

**FLOWERING GLAD PRICES**—Your choice of large flowering glads listed above, 5 bulbs 25c; 12 bulbs 54c; 50 bulbs \$1.95.

GOOD LUCK SHAMROCKS SEE PAGE 5

# Finest GIANT DAHLIAS



Dahlia Jersey's Beauty

Grow SPRING HILL'S superior flowering dahlias for abundance of lovely flowers this summer. Scientifically fertilized, hand cleaned, No. 1 crown divisions.

**PRIDE OF CALIFORNIA** (Formal Decorative)—One of the best, reliable superbly formed large deep red, excellent for cutting. No. 1 roots, 27c each; 3 for 60c.

**MARSHALL'S BEAUTY** (Decorative)—The glowing pink of perfect form. Extremely beautiful and free flowering. Unsurpassed for its color and type. No. 1 roots, 35c each; 3 for 75c.

**MRS. I. DEVER WARNER** (Decorative)—Beautiful large orchid blooms in its class and color. No. 1 roots, 28c each; 3 for 55c.

**JANE COWL** (Informal Decorative)—Extra large dependable and beautiful dahlia. Lovely autumn tints of old gold and bronze. Always good. 32c each; 3 for 70c.

**MRS. IDA PERKINS** (Formal Decorative)—Magnificent pure white fully double flowers, extra large and showy. A good grower and bloomer. No. 1 roots, 28c each; 3 for 65c.

**JERSEY BEACON** (Formal Decorative)—Mammoth perfectly formed Chinese scarlet flowers with buff reverse. On strong, long stems. No. 1 roots, 32c each; 3 for 70c.

## SPRING HILL'S GUARANTEED RAINBOW MIXTURE

10 bulbs 25c

Every bulb guaranteed the loveliest and largest flowering choice blooming size, chosen from our high priced varieties. If bought separately at regular named variety prices would cost as much as \$4.00 or more per 100. Guaranteed to contain 20 or more varieties of red, yellow, white, pink, smoky, and salmon. Early and late blooming. (No Prim.) A gorgeous display of glorious color at tremendous savings. 10 bulbs 25c; 25 bulbs 48c; 50 bulbs 85c; 100 bulbs \$1.50.

## NEW PEARL HARBOR

75c ea.

(8 Championship prizes in two years) Named in honor of Pearl Harbor this new gladiolus was exhibited by number and won wherever exhibited. Luminous pure white of immense size, an outstanding beauty. No. 1 bulbs, 75c each; 3 for \$2.00.



Pearl Harbor

## Pompon or Bouquet DAHLIAS

Favorites for fanciers and cutting. Easy to grow compact plants with perfect miniature blooms that can be cut and cut again from July till frost. Plant now and you will be rewarded with an abundant and endless supply of beautiful flowers this summer.

**CARDINAL**—Flaming fiery scarlet. Vigorous and free blooming.

**PURPLE GEM**—A deep lavender almost violet. Outstanding color and flowers.

**MORNING MIST**—Nice long stems. White with lovely rosy-lavender center.

**YELLOW GEM**—Bright sunny canary yellow of fine form.

**LITTLE BO-PEEP**—Primrose tipped bright carmine. Constant prize winner.

**POSEY PINK**—A true pink. Excellent color and profusion of flowers.

Choice of above pompon or bouquet dahlias. No. 1 roots, 25c each; 6 for \$1.15; 25 for \$3.35.



Pompon or Bouquet Dahlias

## World's Favorite Cannas

AT A BIG SAVING

Best Large Flowering Varieties For Summer Bedding  
NEW! LOW PRICES! ORDER NOW!

No Finer At Any Price. All Top Quality, Guaranteed

**APRICOT** Buff overlaid with salmon-pink. Dark green foliage. 3 ft. tall.

**INDIANA** Superb large orange flowers. Lustrous green leaves. 5 ft. tall.

**KING HUMBERT** Enormous fiery crimson. Heart shaped bronze foliage. 4 ft. tall.

**GEORGE W. PARK** Beautiful pink flower. 2½ ft. tall.

**RICHARD WALLACE** Popular large canary yellow. Green foliage. 4 ft. tall.

**YELLOW KING HUMBERT** Warm lemon with red throat. 4½ ft. tall.

Your choice of economy priced cannas, 3 to 5 eye, No. 1 hand-picked roots, 5 for 60c 15 for \$1.50; 25 for \$2.25.



Canna Yellow King Humbert

## CIRCLE CANNA BED SPECIAL

\$1.95

A colorful circular canna bed 7 ft. in diameter requires 20 plants. 12 of Richard Wallace in first row. 6 of President in second row. 2 of Wyoming in center row. No. 1 hand-picked roots, 3 to 5 eye, regular \$2.30 value. ALL 20 INDIVIDUALLY WRAPPED, \$1.95.

**WYOMING** Free bloomer fiery copper flowers. Violet bronze foliage. 5 ft. tall.

**PRESIDENT** Greatest of all, first to bloom, blazing red. Green foliage. 3½ ft. tall.

**ROSAMOND COLEUS** Flaming red flowers edged with gold 4½ ft. tall.

**CITY OF PORTLAND** Best vivid pink. Green foliage. 3½ ft. tall.

Any above varieties of cannas, 3 to 5 eye, No. 1 hand-picked roots, 4 for 56c; 12 for \$1.50; 25 for \$2.85.

## EVERBLOOMING MEXICAN TUBEROSE

3 for 24c

The sweetest and best cut flower tuberoses; plant now, will begin flowering this July. The rich exotic fragrance of one flower will scent the entire home. Each bulb develops 2 to 5 spikes in succession flowering from July till frost. Not hardy, dig and store during winter. 3 for 24c; 10 for 65c; 100 for \$5.95.

SWEET SCENTED DOUBLE TUBEROSE  
3 for 29c

Lovely large waxy, white flowers that glisten like marble. Prized for superb fragrance, cutting beauty in the garden. 3 for 29c; 10 for 80c; 100 for \$7.45.



Giant Double Tuberoses







# Chrysanthemums for the AUTUMN GARDEN

## FAMOUS CUSHION CHRYSANTHEMUMS

ENJOY NEW COLORS from improved free flowering hardy strains. Several hundred blooms, even thousands of blooms the first year on one plant (note opposite picture). These same new types cost 65¢ to \$1.00 each from other nurseries. SAVE! YOU cannot buy better cushion mums at any price.

**KING CUSHION** Nearest to red. Superb large, double flowers of coral bronze. Early and profuse flowering. The best red cushion. Highly recommended.

**BRONZE CUSHION** Large salmon-pink overlaid with old gold and flame. Beautiful, soft, delicate color tones. One of the best.

**GOLD CUSHION** New profuse flowering early strain. Surpasses all other golden varieties for striking color and abundance of flowers.

**WHITE CUSHION** Buds of this variety open beautiful shell pink. The open flowers of clear snow-white really stand out contrasted with buds.

**PINK CUSHION** Most popular color. Improved strain with lovely cameo-pink flowers in greatest profusion. The first variety to flower. Very hardy and dependable.

Strong pot plants guaranteed to bloom this autumn. Your choice of varieties alike or assorted. 35c each; 3 for 90c; 10 for \$2.85.



## Large Flowering Exhibition CHRYSANTHEMUMS

PLANT NOW—Enjoy a garden of flowers this Autumn.

**PINK SUPREME** Extra large, early flowering beautiful, soft, clear pink.

**BRONZE QUEEN** Giant sized, well formed flowers of Autumn colors.

**CERISE KING** New immense, dark satiny-red. Highly recommended.

**PEARL** Perfect petal arrangement, mammoth size. Very popular, hardy and vigorous.

**GOLDEN GLOW** Early profuse flowering with large bright yellow blooms.

5 for 98¢

**LAVENDER LADY** Extra large, clear silvery lavender.

All above mums guaranteed new early flowering, hardy and vigorous perfectly formed Giant Exhibition flowering varieties. Your choice above mums alike or assorted. 25c each; 3 for 70c; 5 for 98c.

## NEW CHRYSANTHEMUMS for the GARDEN of TODAY!

Finest new hardy varieties. Expertly selected from hundreds of new varieties grown by Spring Hill. Each a headliner in its color or class.

**ALGONQUIN** New early blooming, bright yellow. Considered hardiest, large, double, clear yellow variety. 30c each; 3 for 75c.

**BURGUNDY** New sweet scented hardy Korean. Large clusters of bright crimson, double, well formed flowers in September. Most popular variety we grow, when in bloom. 40c each; 3 for \$1.00.

**CALIPH** Vigorous hardy Korean type blooms in late September. Big strong branches of large, double, bright bright crimson flowers with ox blood shadings. 50c each; 3 for \$1.25.

**CYDONIA** Unusual and striking color, very popular when in bloom. Perfectly formed large, double flowers of blazing coral-bronze overcast with copper. 35c each; 3 for 95c.

**EMBER** Excellently formed, double flowers of brilliant orange and coral superbly blended. One of the best. Highly recommended. 30c each; 3 for 85c.

**INDIAN SUMMER** Extra large, attractive, glowing orange and gold. Tall growing with strong stems that need no support. 30c each; 3 for 85c.

**GRANNY SCOVILL** Immense well-formed fluffy double flowers often four inches across. Early flowering with clear, warm coral-bronze. 27c each; 3 for 70c.

**MANDARIN** Coral-salmon copper and apricot blended to a delightful combination. Perfectly formed, double flowers on erect stems. Excellent cut flower variety. 30c each; 3 for 85c.

**WINNETKA** New large double pure white flowers of perfect form. Free flowering and hardy. 30c each; 3 for 75c.

**CLARA CURTIS** New pink September daisy mum. Begins flowering in August. Very popular. 30c each; 3 for 75c.



EARLY FLOWERING

**DAISY MUM**  
3 for 66¢

Daisy Mum Collection—Guaranteed all finest hardy varieties by color. Gigantic single type flowers in a riot of color. Choice red, yellow or bronze. 27 each; 10 for \$1.95.

### SMALL BUTTON MUMS

Tiny compact perfect shaped double flowers in large clusters. The great profusion of flowers are unexcelled for cutting and color in your garden. Choice of red, bronze, gold, pink and white. Spring sale price, 28c each; 3 for 75c; 10 for \$2.35.

### AMERICAN SHAMROCKS

(Oxalis)—Continuous flowering, each bulb producing a tremendous number of lovely bright pink flowers from early summer until winter. Attractive four-leaf clover like foliage. Not winter hardy, care for same as gladiolus bulbs. Easy to pot and blooms indoors. No. 1 bulbs, 10 for 60c; 20 for \$1.00; 100 for \$3.75.



TIGRIDIAS

**SACRED TIGER FLOWER**  
3 for 40¢

(Tigridia)—Large continuous blooming flowers of red, pink, orange, violet, and gold open with rising sun and die at sunset, blooming anew day after day. Care for as gladiolus bulbs. No. 1 bulbs, 3 for 40c; 6 for 69c; 25 for \$2.45.



New Dream Lily

## Famous Lilies

EXTRA HARDY

EASY TO GROW

**FIERY TORCH LILY** Gorgeous large coppery-crimson blooms in greatest profusion. Hardy and easy to grow. Large blooming size, 4 to 5 inch bulbs, 2 for 50c; 4 for 90c; 10 for \$2.15.

**HENRYI LILY** A sensational new oriental lily. Many apricot-orange blossoms on large flower heads. Hardy as an oak. Its abundance of blooms will brighten your garden. Jumbo 8 to 9 inch bulbs, 45c each; 3 for \$1.15.

**BEAUTIFUL CORAL LILY** Abundance of brilliant and graceful fiery scarlet blooms. Blooming size, special savings, 2 for 50c; 6 for \$1.25.

**LEMON LILY** A perennial not a bulb. One of the hardiest and easiest to grow. Lovely bright yellow flowers grow well in sun or shade. 3 for 50c; 6 for 90c; 12 for \$1.60.

**MAGIC LILY** (Hardy Amaryllis)—It pops out of the ground! Very hardy and is surprisingly beautiful with clusters of 5 to 12 immense wine-red flowers overcast with soft rose. \$1.00 each; 3 for \$2.65.

**DOUBLE TIGER LILY** Unique and beautiful. Extra hardy and free flowering. The tawny copper blooms are splashed and sprinkled with a deluge of attractive dots. Large blooming size, 4 to 5 inch bulbs, 2 for 50c; 4 for 90c; 10 for \$2.15.

**MEXICAN SCARLET LILY** Brilliant scarlet flowers almost shaped like beautiful butterflies. Will bloom in 3 to 4 weeks after planting. Very hardy and will multiply. Special large blooming size, 35c each; 4 for \$1.25.

**NEW DREAM LILY** (Philippeneuse)—An exceedingly popular Lily. Enormous fragrant trumpet-shaped, creamy white lily blooms from August till winter. (See picture.) Save at Low Sale Prices. Blooming size bulbs, 4 to 5 inches around, 40c each; 2 for 75c; 6 for \$2.10.

**FAMOUS REGAL LILY** Easy to grow and sure to bloom. Lovely creamy white flushed with pink with creamy golden throats. Delightful perfume. Blooming size, 4 to 6 inches around, 3 for 50c; 6 for 89c; 12 for \$1.59. 6 to 8 inches in circumference, 3 for 90c; 6 for \$1.65; 35c each.

**NEW SUNSET LILY** Amazing brilliance and beauty in abundance. Blazing scarlet petals sprinkled with chocolate dots. Heavy blooming size bulbs, 35c each; 3 for 90c; 6 for \$1.65.



SPRING HILL Nurseries • Horticultural Specialists since 1849 • TIPP CITY, O.









### 5 KINDS OF APPLES ON ONE TREE

Amazing Scientific Grafted fruit tree bearing 5 kinds of apples at the same time. Guaranteed the best, healthful and cooking variety. Unusual, rare and valuable. All season fruit tree. You'll enjoy. 3 yr., 4 to 5 ft. tall, 9/16" size, \$1.95 each; 3 for \$5.55.

### America's Best ECONOMY PRICES STRAWBERRIES

GOV'T INSPECTED Guaranteed Quality

**HAVE SOME STRAWBERRIES!** Pleasant Memories! Most of us recall the delightful hours spent in a strawberry patch. The strawberry is our most cosmopolitan fruit, adapting itself to practically all climates and soils. All of Springhill's strawberries are GUARANTEED fresh, true to name, superior yielding strains scientifically bred and grown on specially prepared soil to insure superiority in size, vigor and productivity. All strawberries shipped direct from contract grower in Central Indiana.



#### NEW STRAWBERRY PRICES

Name	25	50	100	250	500
Premier	\$ .48	\$ .78	\$ 1.25	\$ 2.00	\$ 4.00
Dorsett	.50	.80	1.25	2.00	3.90
Fairfax	.50	.80	1.25	2.00	3.90
Catskill	.45	.75	1.05	1.65	3.15
Ambrosia	.55	.85	1.25	2.00	3.70
Blakemore	.40	.68	1.00	1.60	2.95
New Majestic	.60	1.05	2.00	3.25	5.25
Senator Dunlap	.44	.76	1.25	2.00	3.70
Everbearing Gem	.58	1.05	1.65	2.50	4.25
Everbearing Wayzata	1.45	2.40	4.00	6.35	11.95
Everbearing Gemzata	1.20	2.20	4.15	6.75	11.45
Everbearing Mastodon	.78	1.40	2.20	4.30	6.75

**PREMIER** Most planted, popular and dependable of all varieties. Large, early and high yielding.

**DORSETT** New early U.S.D.A. introduction, similar to Premier with larger bright coat fruit.

**BLAKEMORE** Finest berry for Southern states. U.S.D.A. yellow free strain, high production.

**NEW CATSKILL** Heaviest producer of all mid-season varieties. More big bright red quality fruits.

**SENATOR DUNLAP** Dependable with long yields of firm colorful berries.

**NEW EVERBEARING GEMZATA** A new cross of Gem and Wayzata. It has the good plant making qualities of Gem and the super quality, size, color and flavor of Wayzata. Destined to be the greatest of all everbearing varieties. Only a few thousand plants available. Self-pollinating.

**EVERBEARING NEW GEM** A prolific everbearing strain with firm large berries of excellent flavor. Famous for size, quality and productivity.

**EVERBEARING GIANT MASTODON** A leader in size, quality, yields and dependability. Plant Mastodon now, enjoy fruit next spring, summer and fall.

**AMBROSIA** Ripens a month later than Premier. Self-pollinating, extremely hardy, and tall, maturing its high quality fruits on the ground.

**FAIRFAX** U.S.D.A. similar to Dorsett in size and type but has darker berries.

### ORDER TODAY, ENJOY THE WONDER STRAWBERRY

FAVORITE FOR SWEETNESS AND HEAVY YIELDS

**NEW EVERBEARING WAYZATA** Plant Wayzata for hill system 18 in. by 18 in. It makes but a few runners, growing in clumps. Wayzata is the largest, most uniform bright red with the finest melting sweet flavor of all everbearing strawberries and outyields other everbearers 3 to 4 times. It will start bearing right after planting. The blooms should be clipped the first few weeks so as not to weaken the plants.

### Enjoy HOME GROWN RASPBERRIES

GUARANTEED TWICE GOVERNMENT INSPECTED



#### RASPBERRY PRICES

All varieties of raspberries Guaranteed the best State Certified Number One grade. It pays to buy quality at Springhill's economy prices.

NAME	BEST SIZE #1 GRADE			
	10	25	100	500
CHIEF	\$ .90	\$ 1.57	\$ 2.45	\$ 4.00
GIANT LATHAM	.74	1.29	1.95	3.15
BLACK BEAUTY	.75	1.25	1.95	3.15
CUMBERLAND	.70	1.50	2.35	3.85
NEW LOGAN	.85	1.55	2.35	3.85
GOLDEN QUEEN	1.25	2.25	3.85	6.25
NEW INDIAN SUMMER	1.00	2.25	3.75	6.25

**LATHAM** Most popular and profitable of the red raspberries. Famous for size, quality, yields and free of seeds.

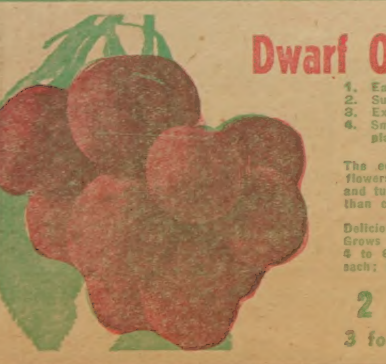
**CUMBERLAND** Largest, most popular and most profitable of all blackcap raspberries. Firm, good for shipping and canning.

**NEW EVERBEARING RED INDIAN SUMMER** New large quality profitable variety. Fresh berries each fall when they taste good and are inexpensive. Best of all everbearing raspberries.

**CHIEF RASPBERRY** New early ripening, high yielding, red raspberry. Very hardy and disease resistant. A money maker.

**BLACK BEAUTY** Superb high quality black raspberries. Abundant yields, disease resistant, popular with growers.

**NEW LOGAN RASPBERRY** The best quality blackcap raspberry on the market.



### Dwarf Quick Bearing CHERRIES

- Easy to grow, high yielding.
- Sure to produce first or second year.
- Excellent for eat, cook or preserve.
- Small shrub-like plants for small area, beautiful ornamental plants.

The entire plant is filled with a mass of lovely snow-white flowers early each spring. The handsome foliage is silvery-green and turns to bright red and gold in autumn. The fruit is larger than cherries, but plum-shaped.

Delicious to eat from bush and also in sauce, jam and jellies. Grows 4 to 5 ft. tall and 3 to 4 ft. broad, should be planted 4 to 6 feet apart. Large bearing age, 4 yr. old bushes, 60¢ each; 3 for \$1.65; 12 for \$8.95.

**2 Year, 2 Fl. Plants, 45¢ each**  
3 for \$1.00; 12 for \$3.50; 100 for \$27.50

# FRUIT THE ENTIRE YEAR

PLANT NOW!!

FOR HEALTH - FOR THRIFT ... FOR VICTORY ...

### DELICIOUS HARDY PEACHES IN LOTS OF 25 ea. 13¢

**ELBERTA**—Fine, juicy golden yellow freestone peach. The old reliable, most popular money making variety.

**CHAMPION**—The finest flavored peach of excellent high quality. Superb rich creamy white blushed peaches.

**LATE ELBERTA**—Extend peach season with this leading late peach. Peaches two weeks later than Elberta.

**J. H. HALE**—Earlier than Elberta, superior in color, size and flavor. Very large golden tender yellow freestone.

**SOUTH HAVEN**—Prolific bearing variety, large golden yellow freestone. Ripens early.

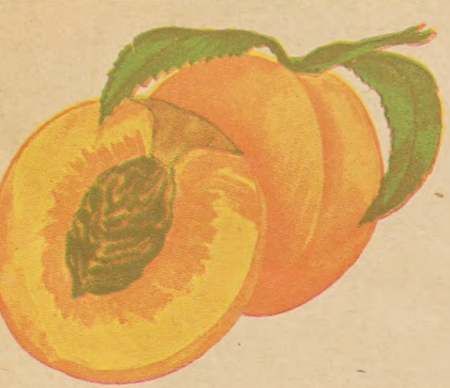
**EARLY ELBERTA**—Like Elberta but bears two weeks earlier. Delicious, extra large golden yellow freestone.

**NEW HALEHAVEN**—Extra hardy. A cross of J. H. Hale and South Haven with the best characteristics of each.

**GOLDEN JUBILEE**—An early yellow freestone peach of exceptional quality, color and flavor.

#### PEACH TREE PRICES—All varieties of Peach Trees listed alike or assorted

Height	Trunk Diameter	Price Each	Price for 3	Price for 10	Price for 25
GROWERS 1 yr. 2-3 ft. tall	1/2 to 3/4 inch	35¢ each	3 for \$ .90	10 for \$3.45	25 for \$8.25
GOOD 2 yr. 3-4 ft. tall	3/4 to 1 inch	50¢ each	3 for \$1.40	10 for \$4.45	25 for \$10.75
BETTER 2 yr. 4-6 ft. tall	1 to 1 1/2 inch	75¢ each	3 for \$2.20	10 for \$6.95	25 for \$16.95



### Enjoy HOME GROWN FRUITS

Delicious · Healthful and Economical

### BEST HEALTHFUL PEARS IN LOTS OF 25 ea. 38¢

**SECKEL**—The well known small sugar pear prized for its rich flavor for eating, desserts and pickling.

**KIEFFER**—Excellent keeping qualities. Fine for canning and eating when properly stored. Large crops each year.

**DUCHESNE**—Largest sweet and mellow midseason pear ripening in October. Healthy and very heavy yielding.

**BARTLETT**—Universal popularity. Mild, sweet, delicious and attractive golden fruits with a striking red blush.

**★ NEW SEEDLESS PEAR** (Patent Pending)—New high grade variety with large colorful mellow fruits that have no core, no seed. (Economical, no waste). Eat and can whole pear. 3 to 4 ft. size, 90¢ each; 10 for \$8.50. Bearing age, \$1.60 each.

#### PEAR TREE PRICES—All varieties of Pear Trees alike or assorted

Grade and Height	Trunk Diameter	Price Each	Price for 3	Price for 10	Price for 25
GOOD, 3-4 ft. tall, 2 yr.	1/2 to 3/4 inch	45¢ each	3 for \$1.29	10 for \$3.95	25 for \$9.50
BEST, 5-7 ft., 3 yr.	3/4 to 1 inch	85¢ each	3 for \$2.49	10 for \$7.95	25 for \$19.50



### Famous ORANGE QUINCE ea. 60¢ High Yielding APRICOTS 3 to 4 ft. Size ea. 62 1/2¢

**GIANT ORANGE QUINCE** Most popular large quince. Famous for its size, rich golden-orange color, productive, easy, aroma and most excellent quality. The best variety for cooking because it gets tender and soft an excellent flavor. Bears 90 quince per tree. 3 to 4 ft. tall, 60¢ each; 3 for \$1.85; 12 for \$6.25.

**MOORPARK** Extra large, hardy and one of the finest apricots. Rich, juicy and sweet. Superior for canning, eating and drying. One of the best. Your choice of above varieties, 2 yr., 3 to 4 ft. size, 70¢ each; 3 for \$2.10; 10 for \$6.75; 25 for \$16.95.

**SUPERB** Extra hardy apricot, originated in Kansas. Medium large fruit, firm and highly colored. Superior for canning, eating and drying. One of the best.

### Springhill's Superior Cherries IN LOTS OF 25 ea. 43¢

**ROYAL ANN**—The golden cherry with a blushed cheek. The leading and best cherry.

**GOVERNOR WOOD**—Large, bright red cherries for canning and retail stands. Best yielding sweet cherry.

**EARLY RICHMOND**—Bears the cherries for the first cherry pies of the season which are so appetizing.

**BLACK TARTARIAN**—Commands premium prices. Yields large superb, black fruits. Delicious, dependable.

**LARGE MONTMORENCY**—The favorite and most dependable sour cherry for home and commercial use.

#### CHERRY TREE PRICES—All varieties of Cherry Trees alike or assorted

Grade and Height	Trunk Diameter	Price Each	Price for 3	Price for 10	Price for 25
GOOD, 3-4 ft., 2 yr.	1/2 to 3/4 inch	50¢ each	3 for \$1.40	10 for \$4.45	25 for \$10.75
BETTER, 4-6 ft. tall, 2 yr.	3/4 to 1 inch	75¢ each	3 for \$2.15	10 for \$6.95	25 for \$16.95
BEST, 5-7 ft., 3 yr. super size	1 to 1 1/2 inch	98¢ each	3 for \$2.85	10 for \$9.25	25 for \$22.50

### FARM JOURNAL and FARMER'S WIFE AMERICAN POULTRY JOURNAL

Dept. C, Philadelphia, Pennsylvania. 12 months for only 25¢. You will be delighted and wonder how these two great illustrated magazines, 25¢ for 1 yr. subscription. Oldest and most instructive magazine.



### Springhill's Finest HARDY PLUMS IN LOTS OF 25 ea. 50¢

**BURBANK**—Large, bright cherry red. A success in all sections. Heavy bearer of tender, juicy fruits.

**LOMBARD**—Heaviest yielding and dependable variety, medium size, violet-red freestone fruits, yellow flesh.

**YELLOW EGG**—Favorite for canning and eating. Heavy yielder of extra large golden freestone fruits.

**GIANT PRUNE**—Most popular bright blue freestone plum. Firm, golden flesh.

#### PLUM TREE PRICES

All varieties of Plum Trees alike or assorted. Guaranteed first class trees.

Height	Each	3 for	10 for	25 for
2 yr., 3-4 ft. tall	60¢	\$1.70	\$5.45	\$12.50
Super Size, 5-7 ft. tall	95¢	\$2.75	\$8.95	\$22.00

### FOR GOOD HEALTH, GOOD EATING AND BIG SAVINGS

### New and Better APPLES IN LOTS OF 25 ea. 36¢

**RAMBO**—Well known favorite for good flavor. No other apple is prized so much for eating and desserts.

**BALDWIN**—Old favorite with rich, juicy red apples that keep into the winter. Yields large crops.

**WEALTHY**—The leading summer variety. Heavy yielding, high quality, red striped, fine grained.

**MCINTOSH**—Follows Wealthy for season. A bright red tangy apple unsurpassed for eating, cooking.

**JONATHAN**—High quality, crisp, bright red fruits. Quality, quantity unsurpassed for cooking, eating.

**NEW LODI**—Extra early large golden apple, surpassing Yellow Transparent for cooking and eating.

**GRIMES GOLDEN**—Our leading yellow apple. Dependable and tasty, favorite for cooking, eating.

**NEW DOLGA CRAB**—The best of all bearing third year. The fiery red fruits make superb jelly.

**RED ROME BEAUTY**—Late keeping, cooking apple. Unsurpassed for yield. Commands high prices.

**STAYMAN WINESAP**—A champion for size, quality, productivity. Leading cooking, eating apple.

**YELLOW DELICIOUS**—Same shape, size and quality of regular Delicious, excels in quality, yields.

**YELLOW TRANSPARENT**—First to ripen. Dependable, high yielding early variety. Large golden.

**DOUBLE RED DELICIOUS**—Famous for color, mellowness, flavor, cooking, eating, keeping, yields.

**NEW GIANT RED WINESAP**—(Turkey)—Highly recommended for size, color, yields and quality.

#### APPLE TREE PRICES—All varieties of Apple Trees alike or assorted

Grade and Height	Trunk Diameter	Price Each	Price for 3	Price for 10	Price for 25
GOOD, 3-4 ft. tall, 2 yr.	1/2 to 3/4 inch	42¢ each	3 for \$1.20	10 for \$3.75	25 for \$9.00
BETTER, 4-6 ft. tall, 2 yr.	3/4 to 1 inch	70¢ each	3 for \$1.98	10 for \$6.40	25 for \$15.50
BEST, Super size, 5-7 ft.	1 to 1 1/2 inch	90¢ each	3 for \$2.65	10 for \$8.45	25 for \$20.75



**★ ANOKA** A NOTWORTHY APPLE—The noteworthy apple created by one of America's master plantmen, often bears fruit the first year. No waiting for those wanting fruit immediately. Hardy in all climates. This great apple has proved to be one of the very best summer apples, with large, well-formed, red, striped cooking. Remember—no waiting. Better order a tree now and have apples next summer. 3 to 4 ft. trees, 95¢ each; 3 for \$1.40; 5 to 7 ft. trees, 3 yr. bearing age, \$1.90 each; 3 for \$2.70; 10 for \$8.95.

### SPRINGHILL NURSERIES ... Horticulture Specialists & Consultants ... TIPP CITY, O.

### Large BEARING AGE GRAPEVINES

Why wait? You can enjoy grapes from your own vines next fall. Plant now! The vines we will send you have already produced one crop of fruit. Concord only, trimmed for planting, 75c each; 3 for \$1.98.

### WONDERFUL NEW HARDY GRAPES

**CAGO** Best quality of all red grapes. Beautiful fruit prized for eating, desserts, salads and juice. 2 yr. No. 1, 35¢ each; 3 for 90¢; 10 for \$2.75.

**PORTLAND** New early white variety. Perfect large berries of excellent quality in high bunches. 2 yr. No. 1, 35¢ each; 3 for 90¢; 10 for \$2.75.

**NEW FREDONIA** Immense clusters of extra large bluish purple berries that ripen 2 weeks ahead of Concord. Highly recommended. 2 yr. No. 1, 35¢ each; 3 for 90¢; 10 for \$2.75.



**NEW SEEDLESS CONCORD GRAPE**  
New York State Fruit Testing Association after years of hybridizing has succeeded in crossing the famous Concord grape and developing a new seedless race of grapes. Seedless Concord is Concord type. The bunches and berries are a little smaller but have the same fine flavor as regular Concord, 3 yr. bearing age, \$1.00 each; 3 for \$2.75.

### CONCORD AMERICA'S FAVORITE Specially PRICED

Especially priced Concord—The most popular grape in the United States commercially and for home use. This dependable, heavy yielding variety has an abundance of large bunches of big, dark blue, sweet, juicy fruits. Special low prices, 2 year vines will bear in 2 years. Giant size 2 yr. XX, 24¢ each; 5 for 90¢; 10 for \$13.45; 2 yr. good size, 3 for 42¢; 10 for \$1.15; 25 for \$2.65; 100 for \$6.75.

### Popular Economy Priced Grapes

Dependable and easy to grow. Spring Hill's Giant size 2 yr. Vines will bear next year. Guaranteed finest hardy varieties in all America and highest quality plants.

**AGAWAM** Large compact bunches of beautiful red berries. Very productive and delicious. Extra sweet.

**CONCORD**—Specially priced. See above.

**CHAMPAGNE** Beautiful large golden flame colored high quality grapes. Big bunches and yields.

**MOORE'S EARLY** A good reliable black grape. As good as Concord, but ripens a week earlier. Profitable because of its early ripening.



#### GRAPE PRICES—Your choice of above varieties of Popular Grapes

Size	Each	5	12
BEST Size, 2 yr. XX	30¢	\$1.25	\$2.70
GOOD Size, 2 yr.	24¢	95¢	1.98

### WASHINGTON ASPARAGUS

New giant rust-resistant strain; ahead of others in size, tenderness, vitamins, and long cutting period. Crop the first year after planting. Easy to grow.

#### WASHINGTON ASPARAGUS PRICES

Size	10	25	100	250
Jumbo Size	.60	\$1.25	\$3.95	\$8.50
2 Yr. Size	.38	.75	2.50	4.50



**NEW PARADISE ASPARAGUS** Commercial growers are more enthusiastic about this great new variety. It produces younger, more abundantly and is very hardy and healthy. It compares or surpasses other leading varieties for size, color and flavor. 2 yr., 12 for 80¢; 25 for \$1.50; 100 for \$4.66.

### Tasty Pie Plant or Rhubarb 3 for 39¢

**SPRING HILL'S LINNEAUS RHUBARB**—Makes appetites tingle for its wholesome and healthy pies and sauces. One of the easiest plants to grow and yet a profitable investment. Order enough for your home needs now as spring is the ideal planting time for Rhubarb. LINNEAUS RHUBARB PRICES: 1 yr. whole roots, 3 for 39¢; 6 for 65¢; 12 for \$1.00. 2 yr. whole roots hand graded, 3 for 60¢; 6 for 95¢; 12 for \$1.75.

### NEW RUBY RHUBARB 3 for \$1.45

The first vegetable of Spring. A solid red from top to bottom, even the inside flesh is bright red. Sweetest and most tender of all rhubarb. Grown from divisions, guaranteed true stock. 60¢ each; 3 for \$1.45; 10 for \$4.65.



**GIANT RED McDONALD RHUBARB**  
The finest with extra large, blood-red stalks all the way up. Famous for its color, tenderness, flavor, and yield. Grown from divisions; true imported stalk. Very scarce. 55¢ each; 3 for \$1.45; 10 for \$4.15



**SAVE**  
at these New  
**LOW PRICES**

# Beautiful Hardy Flowers

**...GROW EACH YEAR WITHOUT REPLANTING**



**BLACKBERRY LILY**—Lovely, coppery-golden flowers dotted scarlet, with striking seed pods. A favorite with all flower lovers. 3 yr.

**3 for 45¢**  
6 for 79¢



**CANTERBURY BELLS** (Cup and Saucer) — Unsurpassed grace and beauty, and magnificent display.

**3 for 45¢**  
6 for 75¢



**PAINTED DAISIES**—Splendid mixture containing double, semi-double and single flowers of pink, rose, and red. Strong 2 yr. plants.

**27¢ each**  
3 for 70¢  
10 for \$1.95



**GIANT SHASTA DAISY**—Largest and most popular white cut flower; Shasta daisy, white with golden centers.

**3 for 50¢**  
6 for 90¢



**NEW ARISTOCRATIC IRIS KAEMPFER**—New giant doubles. Often large as dinner plate. Best of all Iris species. 2 yr.

**25¢ each**  
5 for \$1.00



**GIANT HYBRID DELPHINIUM**—A choice imported strain; unsurpassed for color and size. Dark and light blue. 2 yr. blooming clumps.

**35¢ each**  
3 for 90¢; 6 for \$1.45;  
12 for \$2.65



**OUTDOOR HARDY FERNS**—Marvelous for natural effects. Grows best in shade.

**OSTRICH**—Tall airy fronds very graceful.  
**ROYAL**—Compact with handsome glossy foliage. 2 and 3 yr. clumps.



**BLUE FRINGED DAISY**—Clusters of beautiful azure blue flowers for several months each summer. 2 yr.

**25¢ each**  
3 for 60¢



## OLD-FASHIONED BLEEDING HEART

(Dicentra Spectabilis)—A favorite variety. Tall growing with large, graceful blooms. 2 yr.

**40¢ each**

3 for \$1.00

Everblooming Plumy Bleeding Heart see Page 2

## SWEET WILLIAMS

Lovely garden favorite. Superb, mixed, guaranteed finest, improved giant flowering strain.

**6 FOR 50¢**

## GHOST PLANT

Silver King Artemisia. Sparkling silver foliage; lovely for bouquets or dried for winter decorations.

**3 FOR 65¢**

## WINTER HARDY BEGONIA

Grows best in semi-shade. Grows each year without replanting. Exquisite foliage and pink flowers all summer.

**3 FOR 60¢**

## Winter Hardy Marguerite

Improved Kelway's Glorious. Beautiful large golden daisies. Easy to grow, blooms all summer.

**3 FOR 40¢**

## NEW HARDY FUCHSIA

Advise winter protection. Brilliant, ruby-red flowers in great profusion all summer. Prefers partial shade.

**3 FOR \$1.00**

## HARDY BLUE MIST

Excellent for cutting. Grows 2 ft. tall, filled with striking chicory-blue flower in Autumn. Easy to grow.

**3 FOR 45¢**

## BUTTERFLY FLOWER

Attracts beautiful butterflies. Brilliant flower clusters of dazzling orange throughout summer.

**3 FOR 39¢**

## CHOICE COLUMBINE

Aquilegia Imperial Hybrids. Superb new extra, long-spurred flowers of amazing colors and beauty.

**3 FOR 65¢**

## Chinese Balloon Flower

Blue Stars of Beauty. Exquisite opalescent-blue balloon-shaped buds open into lovely sky blue stars.

**3 FOR 40¢**

## NEW PINK LYTHRUM

Favorite for lasting bouquets. Beautiful bright pink towering flower spikes 3 to 4 ft. tall.

**3 FOR 50¢**

## NEW BABY'S BREATH

Blooming 3 or 4 months; profusions of dainty pink flowers unsurpassed for use in bouquets. 2 yr.

**25¢ each**

4 for 75¢; 10 for \$1.75



## PRINCE OF WALES VIOLETS

Fragrant corsages until after Thanksgiving. Hardy spring and fall blooming. 2 yr. clumps.

**27¢ each**

3 for 70¢

## FOXGLOVE

Lovely large, golden flowers with beautiful spotted throats. A hardy perennial flower.

**3 for 50¢**

6 for 90¢



## NEW VESPER IRIS



(Dichotoma)—One of the newest and longest blooming iris. Flowers three to four weeks in August. One plant has hundreds of blooms. Lovely porcelain blue flower with delicate gold and pink colorings.

**40¢ each**

3 for \$1.00

## WINE POPPY

Gloriously rich and sweet magenta flowers all summer long. A trailing perennial of outstanding beauty.

**3 for 55¢**

10 for \$1.75



## GIANT CONE FLOWER

**25¢ each**

(Flower Rudbeckia Purpurea)—Tall stately lavender or magenta flowers with glistening centers or cones. Blooms throughout the summer, excellent for cutting. 2 yr. heavy blooming size, 3 for 60¢; 12 for \$2.15; 25¢ each.



Cone Flower

## BEAUTIFUL GARNATION

**15¢ each**

(Chabaud's Giant Double Improved)—Will bloom all summer long for you 16 to 18 inches high, robust and profuse flowering. Crimson, scarlet, pink, white and salmon hybrids. Big blooming size, 15¢ each; 10 for \$1.25.



CARNATIONS

## EVERBLOOMING HARDY VERBENA

**25¢ each**

One plant that blooms from early spring until late fall. Delicate rose and orchid flowers. Continuously in flower. 25¢ each; 3 for 55¢.



# AMERICA'S CHAMPION COLLECTION OF HARDY PHLOX

- CHIEFTAIN** New glowing dark oriental red, surprising beauty.
  - MORGANROOD** Gorgeous cherry-red, striking, magnificent.
  - SALMON GLOW** Soft orange-salmon; popular and lovely color.
  - LEO SCHLAGATER** Intense fiery scarlet, most brilliant of all phlox.
  - MOONLIGHT DREAM** Extra large pure snow white flowers.
  - STARLIGHT** Rich reddish-lilac, clear white star center.
  - DAILY SKETCH** Best large salmon pink. Free flowering.
  - GEORGE STIPP** Enormous salmon pink spikes, light eye.
  - HAUPTMAN KOEHL** Massive American Beauty red flower trusses of striking brilliance.
  - COUNT ZEPPLIN** Big crispy white vermillion, red eye.
- Your choice of above varieties, 2 yr., Best blooming size, 32¢ ea.; 3 for 80¢; 5 for \$1.20; 10 for \$2.20



Hardy Phlox

## ORDER PHLOX BY COLOR

**3 for 60¢**

**5 for 85¢; 10 for \$1.50**

To keep a balanced inventory, Spring Hill selects our better named phlox by color. Our selection of varieties—your choice of the following colors: Red, Salmon, White, Pink, Blue. Labeled as to color only.



# DEPENDABLE EVER BLOOMING ROSES of FAME and BEAUTY

*Plant Now* FOR GORGEOUS BLOOMS EARLY NEXT SPRING AND ALL SUMMER LONG

## NEW Everblooming Hybrid Tea Roses

These new and better roses are all Monthly or Everblooming Tea Roses. Strong 2 yr., No. 1½ Ohio field grown roses. It is impossible to buy better varieties or plants. Moderately priced.

AT A BIG SAVING



### BEAUTIFUL EVERBLOOMING ROSES

GUARANTEED FINEST GRADED HYBRID TEA ROSES

**6** for only \$ **1**

Finest expensive varieties expertly chosen. Each a leader in its color for size, abundance of blooms, as well as hardiness and disease resisting ability. Guaranteed graded to A. A. N. standards, 2 canes or more 12 inches long. These seconds are a little smaller in size but they will grow and bloom profusely this summer. An outstanding buy in fine roses for the money.

**TALISMAN**—Most popular blended scarlet, orange and gold.

**ETOILE DE HOLLAND**—Immense deep dazzling crimson. Profuse blooming.

**PINK RADIANCE**—Extra large double silvery pink. Best rose grown.

**RED RADIANCE**—Bright crimson red. Vigorous, hardy and healthy.

**SUNLIGHT**—Lovely apricot buds change to intense gold.

**K. A. VIKTORIA**—Best large double white rose in existence.

SOLD ONLY IN A COLLECTION OF SIX PLANTS AT THIS LOW PRICE



**K. A. VIKTORIA** Best double white rose grown. Perfectly formed pure white.

**MRS. E. P. THOM** Beautiful long pointed buds open into unfading yellow. Fragrant and sturdy.

**TALISMAN** A medal winner with old gold, copper and red superbly blended. Dependable, popular.

**McGREY'S YELLOW** Large, bright, but-tercup yellow blooms. Unfading. Dark green foliage with red stem.

**BETTY UPRICHARD** Soft, salmon-pink with coppery carmine reverse. Dependable and vigorous.

**MRS. SAM McGREY** Striking, scarlet-copper-orange, flushed red outside. Profuse bloomer.

**MRS. HENRY BOWLES** Bright pink flowers, flushed with salmon. Very fragrant and vigorous.

**DUQUESA DE PENARANDA** Lovely long pointed buds of apricot-orange opening into charming double blooms of brilliant copper.

**SYRACUSE** Immense brilliant crimson. Extra hardy and healthy, strong growing, blooming variety.

**E. G. HILL** Massive double deep crimson-maroon blooms in abundance all summer.

**PRESIDENT HOOVER** Extra large and free flowering red, orange and gold color tones.

**MRS. P. S. DUPONT** Beautiful deep yellow fragrant flowers. Popular and dependable.

**HEINRICH WENDLAND** A beautiful golden yellow contrasted with nasturtium red on opposite surfaces of the petals.

**ETOILE DE HOLLANDE** Favorite free blooming giant double crimson. Superb beauty.

**EDITH NELLIE PERKINS** Prolific, dependable bloomer of silvery-rose, copper with gold.



### EVERBLOOMING ZERO ROSES

(New Grootendorst Supreme)—Grows well in North or South, no winter protection. Blooms all summer long. The large bright crimson flowers are borne double and borne in clusters resembling bouquets of carnations. Good for cutting. 2 yr. No. 1,

each 49¢  
3 for \$1.35

2yr. No. 1½ **60c** ea 3 for \$1.65 | 2yr. No. 2 **35c** ea 6 for \$1.75  
10 for \$4.95 | 12 for \$2.85

**GOLDEN ROSE OF CHINA**  
(Rosa Hugonis)—A new Bush Rose from China. Spectacular in its exotic beauty. Slender sprays in all directions, gracefully arching beneath loads of bright yellow, single flowers. Strong 2 yr., field grown plants, 2 to 3 ft. tall.

each 49¢  
3 for \$1.35

### AMERICA'S BEST HARDY CLIMBING ROSES

**PAUL'S SCARLET** The parent of BLAZE and winner of Gold Medal as the best climbing rose at the National Society's Exhibition. Striking scarlet color. Large solitary flowers like Climbing American Beauty. Blooms over a long period. Heavy 2 yr. No. 1½ field grown, 45¢ each; 4 for \$1.65; 12 for \$4.50.

**DR. VAN FLEET** The delightful flesh pink flowers are large and double. Borne on long stems in great profusion. Fine for cutting. One of our best climbers. Heavy 2 yr. No. 1½ field grown, 45¢ each; 4 for \$1.65; 12 for \$4.50.

**CRIMSON RAMBLER** Greatest profusion of fiery-crimson flower clusters. Healthy foliage and rapid growing vines. An old time favorite for color, profusion of flowers.

AS LOW AS **45¢**

**SPANISH BEAUTY** (Mad. G. Staechelin)—Recent European introduction gaining in popularity. A free blooming variety with healthy foliage. Long full buds of soft pink flowers with crimson tips and delightful curled petals. Excellent cut flower. Famous for long stems and large buds.

**CL. AM. BEAUTY** Abundance of beautiful fragrant, double, bright red flowers each spring. Has healthy foliage and strong climbing habit of growth. Extra hardy, reliable and popular variety with the fragrance, form and color of its parent, the famous American Beauty. 45¢ each; 4 for \$1.65; 12 for \$4.50.

**PRIMROSE** Flowers are large pure yellow and are produced in abundance, beautiful addition to your garden, being considered the finest of all yellow climbing roses. 2 yr., No. 1½, 45¢ each; 4 for \$1.65; 12 for \$4.50.

**SILVER MOON** Enormous pure white flowers with beautiful center of golden stamens. Most hardy profuse blooming white climber. Strong grower.

AS LOW AS **45¢**

YOUR CHOICE of above varieties of climbing roses. Best 2 yr. No. 1½, field grown, 45c each; 3 for \$1.25; 12 for \$4.50.

### EVERBLOOMING CLIMBING ROSES

**CLIMBING TALISMAN** Rich shadings and blendings of scarlet and gold. Beautiful buds and full flowers. Very fragrant. Free blooming all summer like regular Talisman. 2 yr. No. 1 field grown, 60c each; 3 for \$1.65.

**BLAZE** (Plant No. 10)—Be host to this everblooming scarlet beauty. Dazzling in its brilliance, magnificent in its profusion of bloom. Acclaimed the most popular of all new roses. \$1.00 each; 3 for \$2.50.



# 1-CENT Sale

1c BUYS AN EXTRA PLANT — During Spring Hill's 1c Sale. Ends on June 1, 1943.

# 1c Sale

1c BUYS AN EXTRA ARTICLE

# 1-CENT Sale

1c BUYS AN EXTRA PLANT — During Spring Hill's 1c Sale. Ends on June 1, 1943.

## BLUE SPRUCE

(Picea Pungens Glauca)—Good blue spruce commands the highest prices. The most beautiful and colorful of all evergreens. Guaranteed reselected individually dug, hand graded. 5 years old, branched, 8 to 12 inches tall, 95c each.

SPECIAL SALE PRICE  
**2 for 96¢**



## WISTARIA PURPLE

Very fast growing. Blooms quite young. Magnificent with its drooping clusters of dark lavender shaped flower clusters often a foot long. Regular 3 yr. size, 45c each.

SPECIAL SALE PRICE  
**2 for 46¢**

## FAMOUS ELBERTA PEACH

Juicy golden yellow freestone. A Big Money Maker. Large 2 yr. well branched plants, 3 ft. tall, 30c each; 10 for \$1.01.

SPECIAL SALE PRICE  
**2 for 31¢**

## OLD-FASHIONED SNOWBALL

(Viburnum Opulus Sterilis)—Always a great favorite. Very decorative with its beautiful large white ball-shaped flowers in May and bright foliage in the fall. Excellent for cut flowers. 1 to 1½ ft. tall, 2 yr., 60c each.

SPECIAL SALE PRICE  
**2 for 61¢**



## AMERICAN BITTERSWEET

A beautiful and hardy vine, easy to grow, filled with orange and gold berries each Autumn. Unsurpassed for winter bouquets. 3 yr. fruiting age, 48c each.

SPECIAL SALE PRICE  
**2 for 49¢**

## PRINCE OF WALES VIOLETS

Fragrant—Hardy—Everblooming—The best English violet. The plants were filled with blooms when killing frosts put them to rest for the winter. Thrives in sun or shade. Heavy plants, 39c each.

SPECIAL SALE PRICE  
**2 for 40¢**



## FRAGRANT HONEYSUCKLE

(Lonicera Halliana)—An evergreen vine fast growing, disease free and hardy. Fragrant creamy white flowers. Our most popular ground cover for erosion control. Write for 1,000 lot prices. 50c each; 100 for \$15.00.

SPECIAL SALE PRICE  
**2 for 51¢**

## NEW FALL BLOOMING IRIS

This new race of twice blooming iris flowers in Spring and Autumn. Latest improved strains at tremendous savings. Your choice, White, Blue, Yellow and Dark Violet. 60c each.

SPECIAL SALE PRICE  
**2 for 61¢**

## BOSTON IVY

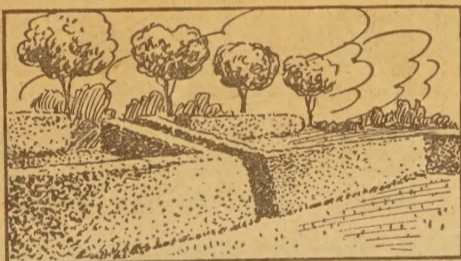
(Ampelopsis Veitchi)—Clings to brick or stone houses. Grows very rapidly. Glossy green leaves which stay on late and turn to a brilliant orange-scarlet in the fall. 3 yr. plants, 65c each.

SPECIAL SALE PRICE  
**2 for 66¢**

## TOM THUMB IRIS

Miniature darlings not over 6 to 9 inches tall that often have over 100 blooms to a clump. Excellent for borders and lovely flowers. Your choice of the following colors: Yellow, blue, purple, white and reddish-violet. 35c each; 6 for \$1.85; 12 for \$1.86.

SPECIAL SALE PRICE  
**2 for 36¢**



## NEW SILVER LAGE VINE

(Polygonum Auberti)—Something new in the way of vines. Makes a growth of 25 feet or more in one season. Covered with sprays of silvery-white flowers in the spring and again in autumn. 2 yr. plants will bloom this year, 85c each.

SPECIAL SALE PRICE  
**2 for 86¢**

## HARDIEST PRIVET

Amur River Privet does not freeze. Hardest of all privets and makes a beautiful clipped hedge. Save 50% on 2 yr. 1 ft. size. This is truly an outstanding value. 10 for 97c; 20 for 98c; 25 for \$1.98.

SPECIAL SALE PRICE  
**50 for \$1.99**

## DUTCHMAN'S PIPE

(Aristolochia Tomentosa)—A vigorous growing vine producing in abundance a purplish blossom much resembling a pipe. 3 yr. plants, 40c each.

SPECIAL SALE PRICE  
**2 for 41¢**

## DOUBLE HOLLYHOCKS

Most vivid-colored hollyhocks hybridized and improved for size, color, shape of blooms. Disease resistant strain with many new colors. 30c each.

SPECIAL SALE PRICE  
**2 for 31¢**

## TREES

Nature's Own Air Conditioners

Planting Instructions Mailed Free With Each Order of \$1.00 or More

### LARGE FRUITING BLACK WALNUT

Spring Hill's large fruiting black walnuts are a select strain from Walnut Grove in Central Ohio. Excellent lumber trees and yield an abundance of large meaty nuts. 1½ to 2 ft. size, 3 for 35¢; 10 for 89¢; 100 for \$5.95.

**3 for 35¢**

## Economy SHADE TREES BEST Varieties

Outclassing All Competition In Small Straight Healthy Trees. Best Varieties.

**1-CENT Sale NEW LOW PRICES! 1-CENT Sale**

PERSIMMON (Diospyras Virginiana)	2 to 3 ft. tall	40c each	2 for 41c
CHINESE ELM (Ulmus Pumila)	3 to 4 ft. tall	35c each	2 for 36c
WHITE BIRCH (Betula Alba)	3 ft. tall	45c each	2 for 46c
SUGAR MAPLE (Acer Saccharum)	3 to 4 ft. tall	50c each	2 for 51c
BLACK LOCUST (Robinia Pseudo-Acacia)	3 to 4 ft. tall	30c each	2 for 31c
SILVER MAPLE (Acer Dasycarpum)	4 to 5 ft. tall	40c each	2 for 41c
WEeping WILLOW (Salix)	3 to 5 ft. tall	45c each	2 for 46c
LOMBARDY POPLAR (Populus Italica)	3 to 4 ft. tall	30c each	2 for 31c
EUROPEAN MOUNTAIN ASH (Sorbus Aucuparia)	3 to 4 ft. tall	70c each	2 for 71c
NEW THORNLESS HONEYLOCUST	3 to 4 ft. tall	40c each	2 for 41c

## RED LEAF MAPLE

(Schwedleri)—The most beautiful red foliaged shade tree. (Note picture above.) Crimson foliage each spring changes to maroon with rich autumn tints. Excellent for color accent. 6 to 8 ft. tall whips, SALE PRICE, 2 for \$3.25

**BIG SAVINGS 2 for \$3.25**

## HARDY CHIVES

2 for 36¢

Indispensable for seasoning, salads, omelets, etc. A hardy perennial plant, easy to grow. Large Clump

# Spring Hill NURSERIES

EST. 1849

GUARANTEED PLANTS Buy With Confidence

## Red Leaf BARBERRY

2 yr., 1 ft. size, regularly 30¢ each

SALE PRICE  
**10 for \$1.45**

100 for \$12.50



# SPRING HILL'S Hardy Flowering Shrubs

It Pays to improve your yard at Spring Hill's low prices

**PLANT NOW!**  
these vigorous shrubs grow more beautiful with the years



Giant Pink Hydrangea

**GIANT PINK HYDRANGEA** (P. G.)—The best known summer flowering shrub. Immense panicles of showy white flowers that change to a rose color and remain in good condition for weeks. 1 ft. size, 2 yr., 35c each; 4 for \$1.25. 3 ft. landscape specimen, 65c each; 4 for \$2.45.

**HYDRANGEA TREE FORM** The famous giant rose hydrangea trained to grow in tree form. 3 to 4 ft. plants, \$1.65 each; 2 for \$3.00.

**FAMOUS OAK LEAF (HYDRANGEA)**—(Quericifolia)—Famous for its large artistic indented and somewhat ruffled Oak-like leaves which turn to beautiful colors in autumn. Giant flower heads in abundance. A rare and beautiful shrub which grows well in shade or sunlight. 1 to 1½ ft. size, 35c each; 3 for 90c. 2 to 3 ft. size, 85c each; 3 for \$2.35.



**NEW EVERBLOOMING BUTTERFLY BUSH**  
Favorite new continuous flowering varieties with improved color, size and profusion of flowers throughout the summer. Strong pot plants that will grow 4 ft. tall and flower all summer. 35c each; 3 for 95c; 12 for \$3.45. 2 yr., No. 1, field grown, 60c each; 3 for \$1.65; 12 for \$6.25.

**NEW DUBONNET** Tall, fast growing, rich dubonnet wine color that glows deep violet-crimson in sunlight.

**NEW CHARMING** A true pink, extra large, long graceful flower spikes.

**ELEANOR** Nearest to true Eleanor blue. Vigorous, hardy and prolific with immense compact blooms.

## NEW ROYAL RED BUDDLEIA

Most beautiful of all butterfly bushes. Thrilling flower spikes which glow like sparkling rubies in the sunlight. Strong pot plants will bloom this summer. Price 75c each; 2 for \$1.25.

**NEW GIANT GOLDEN BELL** (Forsythia Spectabilis)—The erect plants have the largest and most colorful intense golden blooms in greatest profusion. Best and showiest of all. 1 to 1½ ft., 35c each; 4 for \$1.25; 12 for \$3.30. 3 ft. size, 65c each; 4 for \$2.45.

**SWEET SHRUB** (Calycanthus)—An unique shrub with large glossy leaves from the axils of which spring odd, spicily fragrant, chocolate-red flowers. Select 1 to 1½ ft. plants, 25c each; 3 for 60c. Heavy 1½ to 2 ft. plants, 50c each; 2 for 90c.

**HIGH BUSH CRANBERRY** (Viburnum Opulus)—Hands ome snowball with snow white flowers and decorative scarlet berries. 1½ to 2 ft. size, 28c each; 3 for 70c. 3 yr. size, 2 to 3 ft., 55c each; 2 for \$1.00.

**NEW FRAGRANT PINK SNOWBALL** (Viburnum Carlesii)—Flowers are lovely shell pink changing to white; buds tinted coral-pink. Blooms in April before leaves are fully open. The fragrance is most remarkably pleasing somewhat like Gardenia and it scents the whole garden. Excellent for bouquets, a few blooms will scent the entire home. 3 yr., 1 to 1½ ft., \$1.00 each; 3 for \$2.65. (Supply limited.)

**RED LEAVED BARBERRY** Enjoy the bright red foliage of these plants the entire summer. Plant in full sunlight for best coloring. Among the finest shrub introductions of recent years. Striking as a hedge. Government inspected, no restrictions. 1 to 1½ ft. tall, 10 for \$1.45; 25 for \$3.35; 100 for \$12.50. 2 to 3 ft. tall, 10 for \$5.75; 25 for \$13.25; 100 for \$49.50.



SWEET SHRUB



Famous Spirea Van Houttei

## Spirea Van Houttei

Commonly called Bridal Wreath. The flowers are in flat clusters usually an inch or more across produced on spreading, pendulant branches. Plants a mass of white when in full bloom. The most popular and most planted of all hardy shrubs. Easy to grow, does well in sun or shade, good or poor soil. 2 yr. 1 ft. hedging size, 10 for \$1.00; 25 for \$2.25; 100 for \$8.45. 2 yr. 2 ft. hedging size, 3 for 50c; 10 for \$1.50; 25 for \$3.50; 100 for \$13.45. Super size, 3 yr., 3 to 4 ft. tall, 3 for 85c; 12 for \$2.95; 35c each.

AS LOW AS  
**10 FOR \$1.00**

## EVERBLOOMING DOUBLE MOCK ORANGE



Mock Orange

(Philadelphus Virginal)—Large semi-double flowers throughout the season. This is a new and wonder addition to the Mock Orange family. One of the most beautiful shrubs grown and tremendously popular. 2 yr. 12 to 18 inch size, 35c each; 2 for 60c. 4 yr., 2 to 3 ft. size, 60c each; 3 for \$1.65.

## Red Spirea A.W.

EVERBLOOMING DWARF

Everblooming compact low growing shrub with dense foliage and bright pink flowers throughout the season. Used extensively for border and foundation plantings. 2 yr. 1 ft., 35c each; 4 for \$1.25. 3 yr. 2 ft., 65c each; 4 for \$2.45.



Red Spirea

## FINEST FRENCH LILACS

Distinctive new grafted varieties with enormous flower trusses and superb colors. Expertly chosen from hundreds of new improved varieties. Each variety an outstanding leader in its color.

**PRESIDENT GREY**—Striking large double blue.  
**MME. CASIMER PERIER**—Lovely, giant, double white.  
**BELLE De NANCY**—Exquisite, double, soft satin pink.  
**LUDWIG SPATHE**—Favorite and most beautiful red.

Choice of varieties listed on this page. Best size, 3 yr. grafted plants, 3 ft. tall, 85c each; 3 for \$2.35; 12 for \$8.25. Good size, 2 yr. grafted plants, 18 in. tall, 55c each; 3 for \$1.25; 12 for \$4.95.

## OLD FASHION LILAC

(Syringa Vulgaris) Noted for its abundance of beautiful lavender fragrant flowers. 3 yr. heavy 2 to 3 ft., 60c each; 3 for \$1.65. 2 yr. 2 ft. size, 30c each; 3 for 75c.

## BLUE RUSSIAN LILAC

(Syringa Villosa) Blooms 3 to 4 weeks after other lilacs. Large glossy deeply veined leaves of distinct beauty. The flowers are a delightful pale blue. 2 yr. heavy, 2 ft. plants, 50c each; 3 for \$1.25.

Free Valuable Planting Guide with each order of \$1.00 or more.

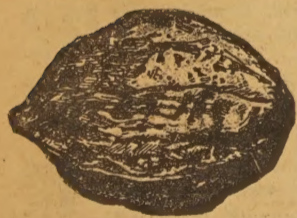
## FRENCH HYBRID LILAC



Special—Spring Hill imported an outstanding collection of new French lilacs from Europe for propagating purposes. We now have several hundred seedlings from these plants, we cannot guarantee colors, but you are certain to get immense flowers in all shades of blue, violet, pink, red and white.

2 yr., 1 ft. tall, 35c each; 5 for \$1.45; 25 for \$6.75

## VALUABLE AND IMPROVED HARDY NUT TREES



## Chinese Walnut

(JUGLANS SIEBOLDIANA)

Has withstood 20 degrees below zero without injury; begins to bear when three years old. The nuts are larger and are borne in clusters of 10 to 20. They resemble English Walnuts in size, shape, and flavor. 2 ft. size, 60c each; 3 for \$1.50. 3 yr. 3 ft., \$1.00 each.



## Heart Nut

(JUGLANS CORDIFORMIS)

The broad tropical appearing trees are fascinating, ornamental, fast growing, winter hardy and productive. Begin bearing when 3 years old. The large heart-shaped nuts are borne in big grape-like clusters. The famous white meats crack out in halves and are noted for their superb flavor. Recommended for those interested in new and better hardy trees. 2 yr. 18 inch size, 65c each; 3 for \$1.65. 3 yr. 3 to 4 ft. size, \$1.50 each.



## American Hazel Nut

(Corylus Americana)

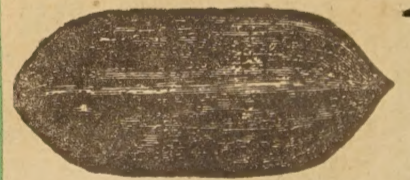
Easy to crack and shell. Excellent large sweet kernels are produced in abundance on low shrubby plants. Never growing over 6 to 12 ft. tall. A fine ornamental shrub that yields when planted close in hedges, shrubs or borders, etc. Extra hardy, attractive and easy to grow. 2 yr. 1 to 1½ ft. tall, 35c each; 3 for 90c; 12 for \$2.95. 3 ft. bearing age, \$1.00 each.



## Chestnut

(CASTENA MOLLISSIMA)

Blight-proof. You can now enjoy finest chestnuts where American Chestnuts have blighted and died. Will bear second or third year after planting when 5 or 6 ft. tall. Grown from imported seed. This excellent chestnut surpasses all others. Fast growing, hardy, and the excellent fruits are 1 to 2 inches across. Buy at these new low prices. Transplants, 1 to 1½ ft. tall, 75c each; 3 for \$1.90. 4 yr., 4 ft. size, \$2.50 each.



## New Hardy Pecan

(HICORIA PECAN)

Hardy and sturdy as an oak. A splendid and beautiful rapid growing shade tree that will reward you with bushels of fine quality nuts 2 to 2½ inches long. The kernels are plump and of finest quality and come out of the thin shells very easily. Sturdy 2 yr., 1½ ft. size, 50c each; 3 for \$1.35; 10 for \$3.95. 4 yr., 4 to 5 ft., \$2.25 each.

## GIANT BLACK WALNUT

Spring Hill's large fruiting strain from Walnut Grove in Central Ohio are excellent lumber and high yielding. 2 yr., 1½ to 2 ft. size, 3 for 35c; 10 for 89c; 100 for \$5.95. 3 ft. size, 3 for 50c; 10 for \$1.25; 100 for \$7.50.

## Mammoth Fruited HICKORY

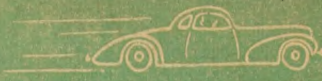
Six years ago our men found an especially large rather thin shelled hickory, which we believe to be the finest value hickory we have ever seen. The 3 yr. seedlings Spring Hill offers are grown from this large variety; however, we cannot guarantee the seedlings will reproduce true from seed. 2 ft. size, 35c each; 3 for 90c.



# SPRING HILLS *Majestic* EVERGREENS

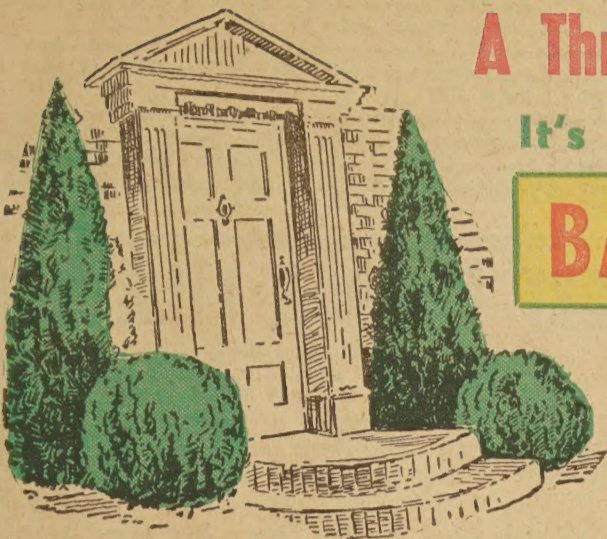


NEW ROADS TO YEAR AROUND Beauty



## A Thrift Suggestion—GROW Expensive EVERGREENS

It's Easy, Enjoyable And Inexpensive To Grow Your Own



### BABY SIZE YOU'LL BE AMAZED HOW FAST THEY GROW

#### 5 Best Tall Upright Narrow Landscape Evergreens

Name	Age	Size	Price for 3	Price for 10
Juniper Columnaris Blue (grafts)	3 yr.	8 to 12 in.	\$1.35	\$3.95
Pyramid Arborvitae	5 yr.	10 to 15 in.	1.25	3.45
Silver Juniper Burki (grafts)	3 yr.	10 to 15 in.	1.35	3.95
Taxus Hicksi or Upright Yew	4 yr.	8 to 12 in.	1.00	2.85
New Irish Juniper Fastigata	5 yr.	12 to 18 in.	1.65	4.95

#### 5 Best Tall Upright Broad Landscape Evergreens

Name	Age	Size	Price for 3	Price for 10
Red Pine	4 yr.	10 to 12 in.	\$.50	\$1.25
Scotch Pine	5 yr.	12 to 15 in.	.60	1.95
Black Hill Spruce	5 yr.	8 to 12 in.	.75	1.95
Chinese Arbor Vitae	6 yr.	18 to 24 in.	1.35	3.95
American Arbor Vitae	4 yr.	10 to 12 in.	.75	1.95

#### 5 Best Dwarf Spreading Landscape Evergreens

Name	Age	Size	Price for 3	Price for 10
Andora Juniper	3 yr.	8 to 10 in.	\$.90	\$2.65
J. Sabina Von Ehrton	3 yr.	8 to 10 in.	1.00	2.85
Blue Juniper Meyeri	3 yr.	8 to 10 in.	1.25	3.45
Juniper Pfitseriana	5 yr.	10 to 15 in.	1.25	3.45
Spreading Taxus or Yew	4 yr.	8 to 10 in.	1.00	2.85

#### 5 Best Dwarf Globe Shaped Landscape Evergreens

Name	Age	Size	Price for 3	Price for 10
Mugho Pine	5 yr.	6 to 8 in.	\$1.00	\$2.85
Biota Compacta, Dwarf Biota	4 yr.	12 to 15 in.	1.25	3.45
Globe Arbor Vitae	4 yr.	8 to 10 in.	1.00	2.85
Golden Dwarf Biota	4 yr.	8 to 10 in.	1.25	3.45
Spiny Greek Juniper	3 yr.	8 to 10 in.	1.25	3.45

#### POPULAR ENTRANCE GROUP

- 2 Pyramidalis Arbor Vitae Matched Pair, 3 ft. tall..... \$8.50
- 2 Globe Arbor Vitae, 2 ft. Matched Pair, Round..... \$7.50

Heavy Landscape Size  
All For **\$12.75** **\$16.00** Value



PYRAMID ARBORVITAE

#### BROAD-LEAF EVERGREENS

The following hardy shrubs have persistent foliage or are evergreen all winter. These evergreen shrubs are in great demand and specified by eminent landscape architects in all expensive plantings. All can be grown in limestone or acid soils.

**EVERGREEN FIRETHORN** (Pyra-cantha) Famous for its scarlet fruits and attractive foliage. Grows 4 ft. tall. 8 to 12 inch, 3 yr., pot size.

**EVERGREEN BITTERSWEET** (Euyonomus Patens)—Grows 2 to 3 ft. tall. Very popular dwarf bushy evergreen shrub. 8 to 12 in., pot size.

**AMERICAN HOLLY** (Hex Opaca)—Have your own Christmas decorations. Plant 3 or more for cross pollination. 1 ft. to 1 1/2 ft. tall, nice 6 year old size.

**HOLLY LEAF MAHONIA** Excellent for semi-shade, grows 4 ft. tall. 8 to 12 inch size most popular evergreen shrub.

ALL ABOVE VARIETIES BROAD-LEAF EVERGREENS..... **40c**



GLOBE ARBORVITAE



SCOTCH PINE



CHINESE ARBORVITAE



BIOTA AUREA NANA



JUNIPER PFITSERIANA

**ECONOMY SIZE RED PINE**

Rapid growing, soft deep green foliage. Fine for screens and tall group planting. 1 ft. tall, \$1.00 each. Matched pair, \$1.75. 10 for \$8.25.

**EACH \$1**

**COLORADO BLUE SPRUCE SPECIAL**

Good Blue Spruce are the most expensive and beautiful of all evergreens. Here's a real bargain. Baby size, 3 yr. old, 3 to 6 in. tall, 10 for \$1.00; 100 for \$7.75.

**SPECIAL 10 FOR \$1.00**

**Economy Size BLUE SPRUCE**

Good Blue Spruce commands the highest prices and are the most beautiful of all evergreens. SPRING HILL guarantees reselected choice Blue Spruce, 8 year old branched plants, 1 ft. tall, 3 for \$2.45.

**SPECIAL 90c EACH**

## LANDSCAPING EVERGREENS SPECIAL SALE PRICES FOR JUNIOR SIZES

- TALL NARROW AND TALL BROAD GROWING VARIETIES**
- PYRAMID ARBOR VITAE** Junior size, 1 1/2 ft. tall. (See picture above.) Most popular of all tall, narrow, dark green Evergreens. Always a good special..... **\$1.15** Ea.
  - CHINESE ARBOR VITAE** Junior size, 2 ft. tall. (See picture.) Excellent fast growing, tall, broad, rich green foliage. Grows well in sunlight or shade..... **95c** Ea.
  - NORWAY SPRUCE** Junior size, 12 in. tall. Most popular for outdoor Xmas tree. Fast growing, tall, broad. Handsome dark green foliage on broad spreading branches..... **95c** Ea.
  - IRISH JUNIPER** Junior size, 2 ft. tall. A favorite tall narrow variety with silvery foliage. Irish Junior will grow in all locations..... **\$1.15** Ea.
  - SCOTCH PINE** Junior size, 1 1/2 ft. tall. Excellent evergreen for screens and group, picturesque, and is a very fast growing variety..... **95c** Ea.

- DWARF GLOBE AND DWARF SPREADING VARIETIES**
- GLOBE ARBOR VITAE** Junior size, 12 in. broad and tall. Grows naturally in globe or ball shape, dwarf habit. A popular low priced landscaping evergreen. (See picture)..... **\$1.00** Ea.
  - GOLDEN DWARF BIOTA** Junior size, 12 inches tall. Exquisite golden foliage, perfect shape, compact growth make this the leading dwarf evergreen..... **\$1.10** Ea.
  - JUNIPER PFITSERIANA** Junior size, 1 ft. spread. (See picture.) Most popular and dependable of all spreading varieties. Handsome silvery green foliage..... **\$1.15** Ea.
  - BIOTA COMPACTA** Junior size, 12 in. tall. Perfect shape with dense glossy green foliage. Attractive wherever placed. Beautiful foliage..... **\$1.00** Ea.
  - JUNIPER ANDORA** Junior size, 1 ft. spread. Grows close to the ground, spreading habit, known as the best dwarf spreading variety..... **95c** Ea.

## THOUSANDS OF EVERGREENS

# Ready to Go!

**BIG SAVINGS IN EVERGREENS** when you COME to the nursery

WE WANT YOU TO TAKE US HOME WITH YOU!

SALE ENDS JUNE 1st, 1943

LARGE SIZE SHIPPED B&B 75c extra per plant. Junior size 40c per plant. See Important Notice Below.

#### IMPORTANT NOTICE

All evergreens will be dug with bare roots; puddled in mud and wrapped in wet moss for shipment. "B&B" means balled and burlapped which signifies plants are dug with solid ball of earth around roots and held in place by firmly wrapping with burlap. If you wish plants dug and shipped B&B add 75c each extra per plant for Large Landscape size and 40c each extra for B&B Junior Landscape size to cover added expense for digging and packing.

